

# DD168oH

## Receiver Instruction

Version: A/00

### Product Features

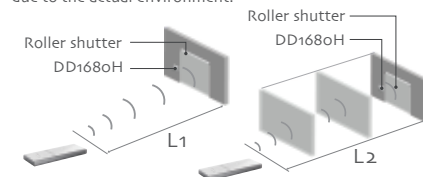


DD168oH receiver

- Wireless receiver
- Input voltage: AC 120~240V  
50Hz/60Hz
- Working temperature: -10°C ~ +55°C
- Low voltage start: ≥85V
- Dimension: 86mm × 86mm × 34mm
- Maximum running time: 4min
- One DD168oH receiver can store  
Max. 20 channels, after more than  
20 channels, only the last channel  
will be covered recycledly

### Radio Range

Note: The effective radio distance will deviate due to the actual environment.

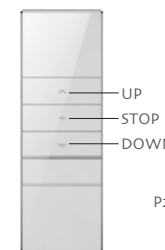


	L1(outdoor)	L2(indoor)	Radio frequency
AC 120V/60Hz	≥100m	≥40m	433.925MHz
AC 230V/50Hz			

### Matchable Emitters

DD1600H  
Single-channel  
emitterDD2700H  
Single-channel  
emitter

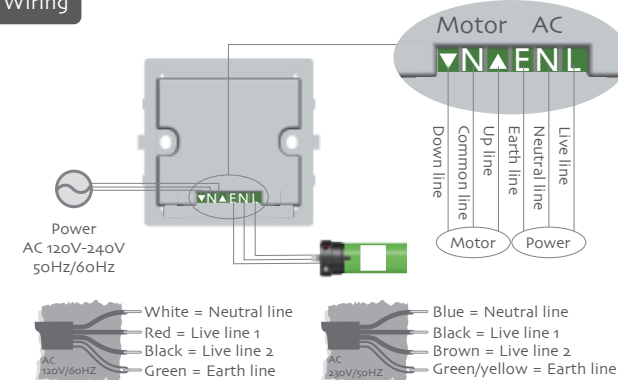
### Instruction Of Buttons



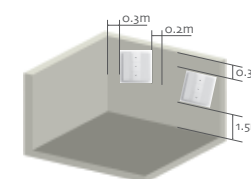
DD1600H

DD1600H  
BackDD168oH  
Receiver

### Wiring



### Best Installation Distance

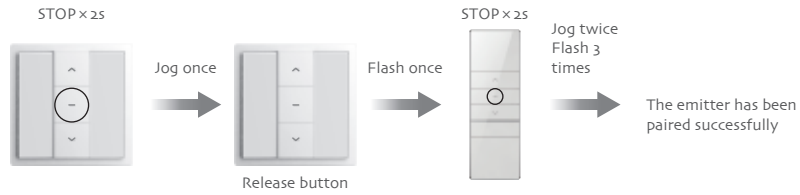


- The shortest distance between receiver and ground ≥1.5m
- The shortest distance between receiver and roof ≥0.3m
- The shortest distance between receiver and receiver ≥0.2m

## Pairing Additional Emitter

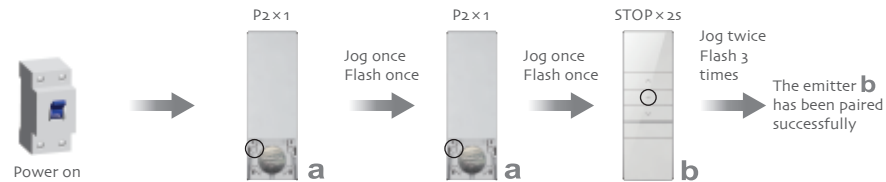
### Method one

Note: During the setting status, every operation should be less than 10s, or else, it will exit the setting and back to original status.



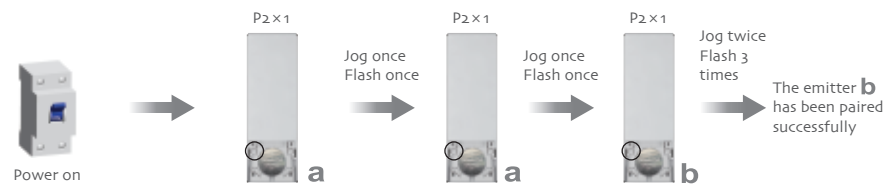
### Method two

Note: Emitter **a** is paired one while emitter **b** is the unpaired one.

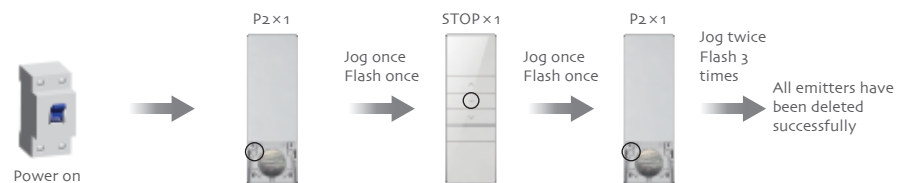


### Method three

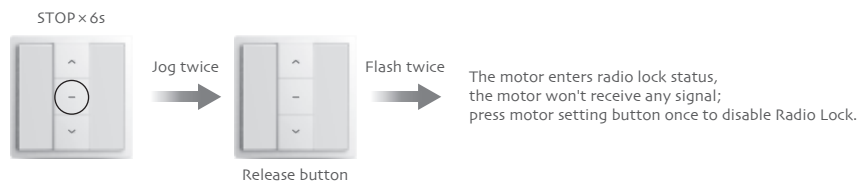
Note: Emitter **a** is paired one while emitter **b** is the unpaired one. Repeat the operation to delete the newly added emitter.



## Delete All Additional Emitters

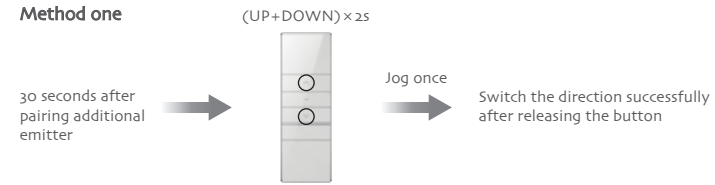


## Radio Lock Function

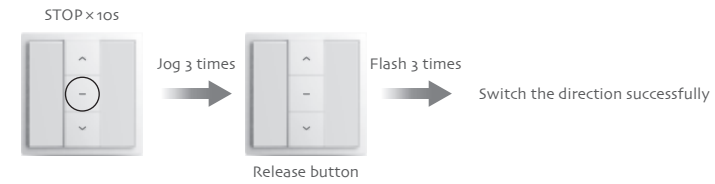


## Switch Direction

### Method one

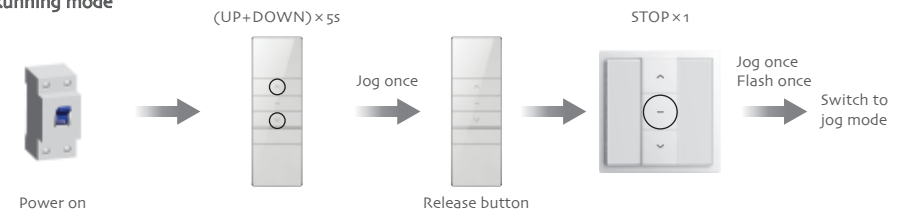


### Method two

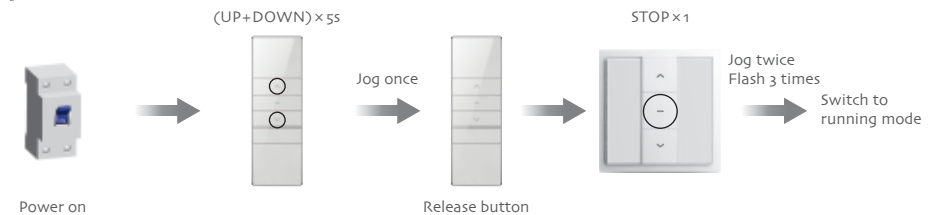


## Jog mode

### Running mode



### Jog mode



## Reset to Factory Mode

